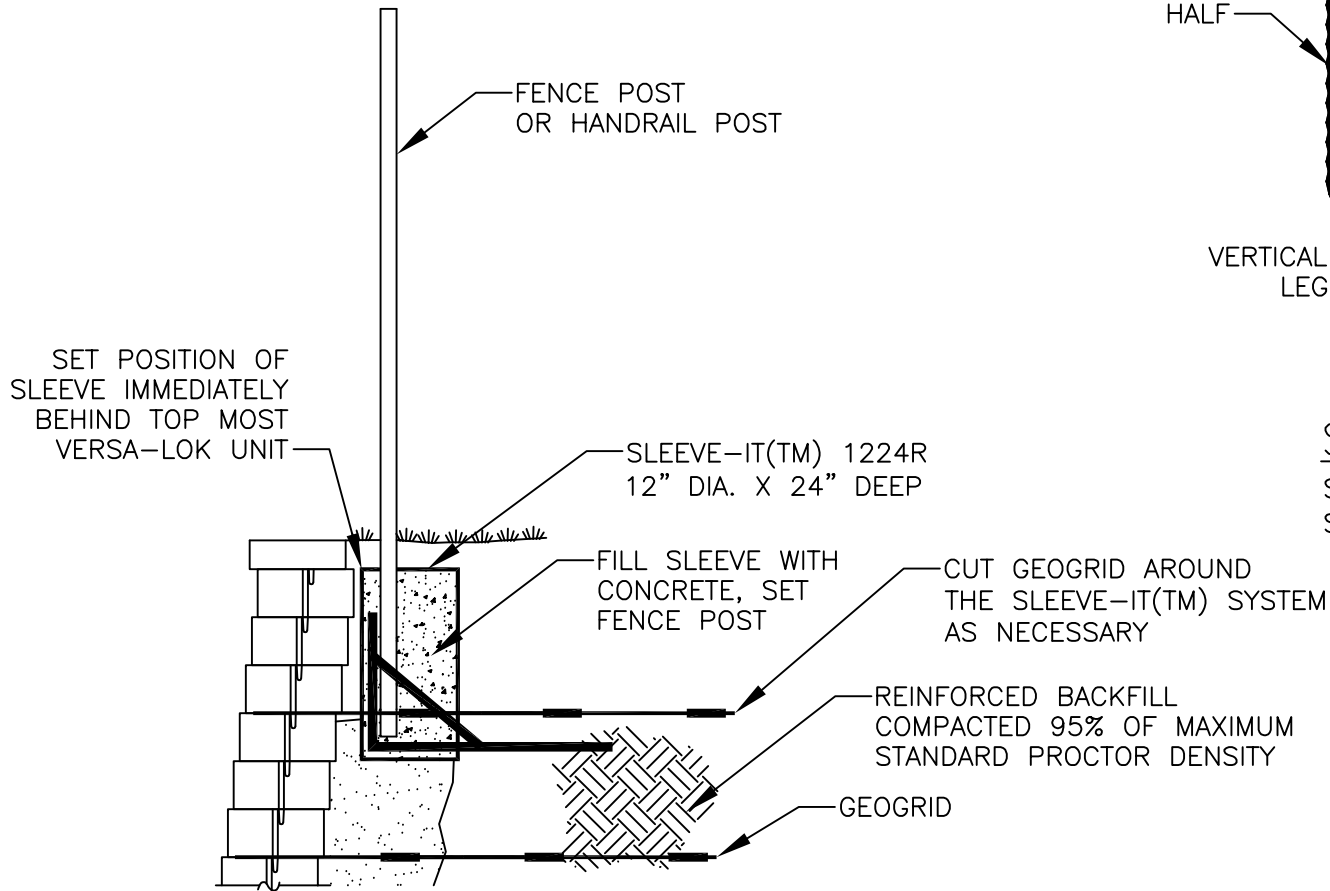
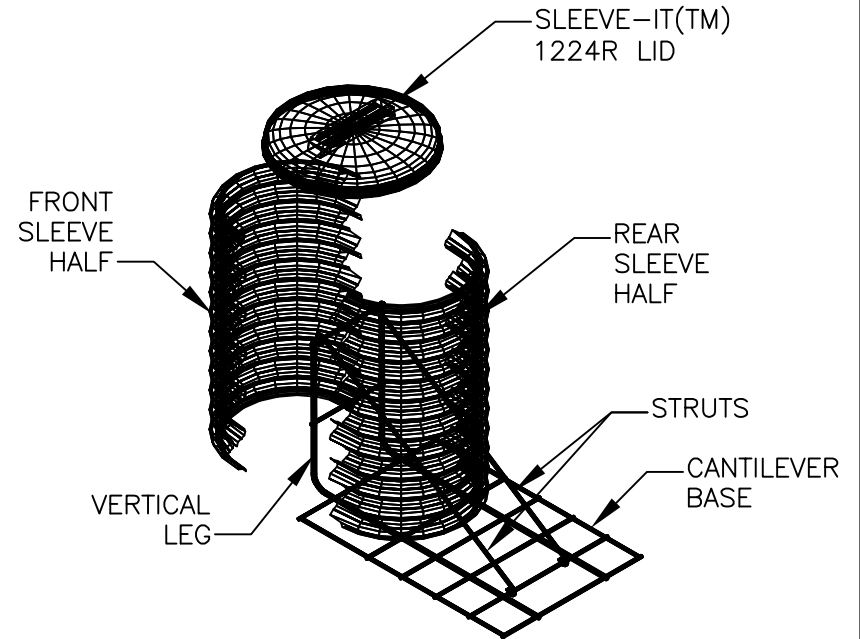


\*FENCING SYSTEMS APPROVED FOR USE WITH SLEEVE-IT(TM) 1224R ARE LIMITED TO THE FOLLOWING HEIGHTS: CHAIN LINK-UP TO 8-FT, PRIVACY -UP TO 6-FT (WOODEN, PVC, METAL). POST SIZE 4"X4" MAX.



### FENCE POST DETAIL W/ SLEEVE-IT(TM) 1224R

STANDARD UNIT WITH SLEEVE-IT(TM) 1224R  
SCALE: NONE



### SLEEVE-IT(TM) ISO 1224R

SYSTEM COMPONENTS  
SCALE: NONE

SEE SLEEVE-IT(TM) SYSTEM MANUFACTURER, STRATA SYSTEMS FOR COMPLETE SPECIFICATIONS, AND TECHNICAL GUIDANCE

THESE PRELIMINARY DETAILS ARE INTENDED AS AN AID IN DESIGNING ATTRACTIVE, DURABLE RETAINING WALLS WITH VERSA-LOK UNITS. FINAL DETERMINATION OF THE SUITABILITY OF ANY INFORMATION OR MATERIAL FOR THE USE CONTEMPLATED, AND ITS MANNER OF USE, IS THE SOLE RESPONSIBILITY OF THE USER. A FINAL PROJECT SPECIFIC DESIGN SHOULD BE PREPARED BY A QUALIFIED, LICENSED, PROFESSIONAL ENGINEER.



**VERSA-LOK<sup>®</sup>**  
Retaining Wall Systems

(800)770-4525 fax(651)770-4089  
6348 Hwy36 Ste1, Oakdale,MN 55128 **Solid Solutions<sup>™</sup>**

VERSA-LOK STANDARD DETAILS

FENCE POST WITH SLEEVE IT

SCALE: 1/2"=1'

DRAWN BY: PPS

CHECKED BY:

DATE: 10/2007

DWG. NO. strnd fence post with sleeve it