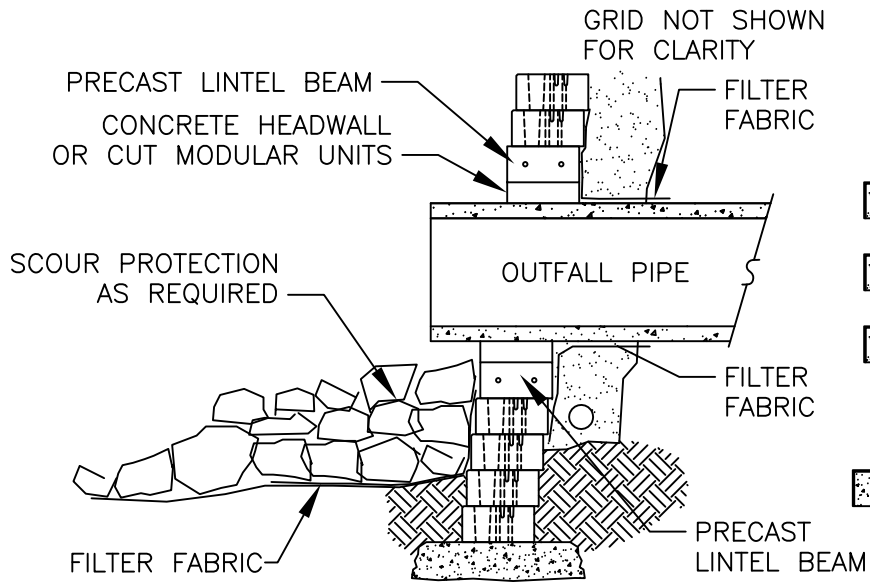


LINTEL NOTES:

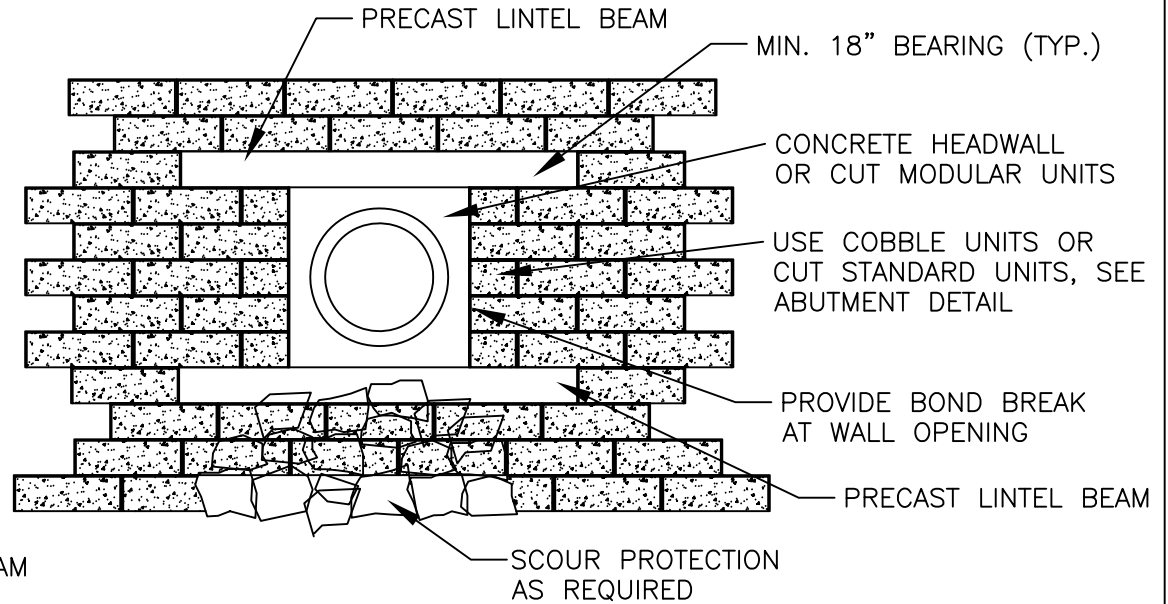
- FINAL BEAM SIZE, REINFORCEMENT, AND CONFIGURATION TO BE DESIGNED BY WALL DESIGN ENGINEER
- LINTEL BEAMS SHALL BE PRECAST WITH MINIMUM 7 DAYS CURE
- HEIGHT OF BEAM SHALL CORRESPOND TO HEIGHT OF MODULAR UNITS
- PLACEMENT OF LINTEL BEAMS SHALL BE CONSISTENT WITH THE PLACEMENT OF OUTFALL PIPE
- INSTALL OUTFALL PIPE PRIOR TO CONSTRUCTION OF WALL ABOVE
- OUTFALL PIPE SHALL EXTEND BEYOND BASE COURSE OF WALL NO LESS THAN 6"
- GEOTEXTILE FABRIC SHALL BE INSTALLED AROUND PIPE OPENING
- LINTEL TO EXTEND MINIMUM 18" EITHER SIDE OF PIPE



WALL W/ PIPE PENETRATION

SECTION

SCALE: 3/8"=1'



WALL W/ PIPE PENETRATION

PROFILE

SCALE: 3/8"=1'

PRELIMINARY

THIS DRAWING IS PRELIMINARY AND SHOULD BE USED FOR ESTIMATING PURPOSES ONLY. A FINAL DESIGN SHOULD BE PERFORMED BY A QUALIFIED REGISTERED ENGINEER. DETERMINATION OF THE SUITABILITY OF ANY INFORMATION OR MATERIAL FOR THE USE CONTEMPLATED, AND ITS MANNER OF USE, IS THE SOLE RESPONSIBILITY OF THE USER.



VERSA-LOK®
Retaining Wall Systems

(800)770-4525 fax(651)770-4089
6348 Hwy36 Ste1, Oakdale, MN 55128 **Solid Solutions™**

VERSA-LOK ULTRA DETAILS

PIPE PENETRATION

SCALE:	AS NOTED
DRAWN BY:	PDL
CHECKED BY:	
DATE:	8/2013
DWG. NO.	ULTRA PIPE PENETRATION