

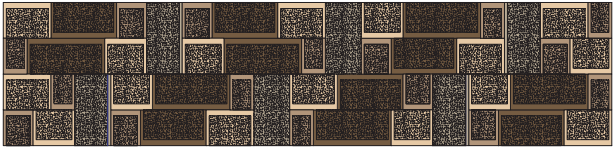
# Estimation

## Large Panel Estimation Guidelines

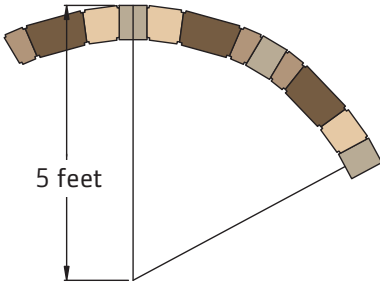
**Mosette units required:** *small, medium, large and vertical*

This information will help you estimate Mosette units required for a configuration utilizing *6-unit panels between vertical units*. This arrangement will create a curve radius of about 5 feet (center of circle to outside edge of curve). For straight walls, alternate the orientation of tapered edges. In curved walls, keep the narrow sides of tapered units toward the concave side. Start with a section of two medium and two small units on the lower wall half and a section of two small, two medium and two large units on the upper wall half. This will help avoid too many vertical joint lines and improve wall strength. Turn and flip units, as desired, within the wall to maximize a random appearance.





Small Unit
  Medium Unit
  Large Unit
  Vertical Unit



The following estimation figures are for a Large-Panel Mosaic wall with a height of 24 inches. Lengths listed permit ends of straight walls to finish evenly. Splitting and/or cutting of units may be necessary for other lengths and for curved walls.

Wall Length	Small	Medium	Large	Vertical
42" (3' 6")	8	8	4	2
72" (6' 0")	12	12	8	4
102" (8' 6")	16	16	12	6
132" (11' 0")	20	20	16	8
162" (13' 6")	24	24	20	10
192" (16' 0")	28	28	24	12
222" (18' 6")	32	32	28	16
252" (21' 0")	36	36	32	20
282" (23' 6")	40	40	36	24
312" (26' 0")	44	44	40	28

*Mosaic permits an unlimited number of variations. Feel free to experiment with your own designs.*