

VERSA-LOK MIDWEST

HARDSCAPES PORTFOLIO

RETAINING WALL SYSTEMS



WHY VERSA-LOK MIDWEST?

Transform your yard into a place of beauty and comfort with landscaping products from VERSA-LOK Midwest. Whether you prefer a classic or a contemporary appearance, VERSA-LOK Midwest has the perfect landscaping solution for you. We'll help you create a special space where you can enjoy the pleasures of outdoor living.



VERSA-LOK STANDARD



WEATHERED STANDARD



WEATHERED STANDARD



STANDARD

STANDARD



WEATHERED STANDARD



WEATHERED STANDARD





WEATHERED STANDARD



STANDARD



A & B CAPS

VERSA-LOK ACCENT

RETAINING WALL SYSTEM



STANDARD ACCENT

VERSA-LOK COBBLE

RETAINING WALL SYSTEM



WEATHERED COBBLE



WEATHERED ACCENT



WEATHERED COBBLE

VERSA-LOK MOSAIC

RETAINING WALL SYSTEM



WEATHERED MOSAIC



WEATHERED MOSAIC



WEATHERED MOSAIC

MOSAIC



MOSAIC



MOSAIC



WEATHERED MOSAIC

OUTDOOR LIVING

VERSA-LOK RETAINING WALLS & WILLOW CREEK PAVING STONES



OUTDOOR LIVING

FUNCTIONAL, ATTRACTIVE AND AFFORDABLE



WILLOW CREEK LEDGESTONE

MANY OUTDOOR LIVING KITS AVAILABLE!



BAR & GRILLS



FIRE RINGS



FIRE PLACE



WOOD FIRE OVEN



FIRE TABLE



CORNER BAR



VERSA-LOK MIDWEST PRECAST PRODUCTS

COPING, CAPSTONE AND STAIR TREADS



VERSA-LOK HARMONY

RETAINING WALL SYSTEM

VERSA-LOK TRI-FACE

RETAINING WALL SYSTEM

WEATHERED HARMONY



WEATHERED HARMONY



VERSA-LOK SQUARE FOOT

RETAINING WALL SYSTEM



VERSA-LOK NEXUS

RETAINING WALL SYSTEM



VERSA-LOK DOT

RETAINING WALL SYSTEM



VERSA-LOK BRUTE

RETAINING WALL SYSTEM



VERSA-LOK BRONCO

RETAINING WALL SYSTEM



VERSA-LOK BRONCO II

RETAINING WALL SYSTEM



ENVIROLOK

VEGETATED RETAINING WALL SYSTEM

VERSALO-K RETAINING WALL UNIT SPECIFICATIONS

STANDARD UNIT SPECIFICATIONS



WIDTH (FACE)	16"
WIDTH (REAR)	14"
HEIGHT	6"
DEPTH	12"
FACE AREA	2/3 S.F.
WEIGHT	82 LBS

ACCENT UNIT SPECIFICATIONS



WIDTH (FACE)	12"
WIDTH (REAR)	8"
HEIGHT	4"
DEPTH	12"
FACE AREA	1/3 S.F.
WEIGHT	36 LBS

COBBLE UNIT SPECIFICATIONS



WIDTH (FACE)	8"
WIDTH (REAR)	6"
HEIGHT	6"
DEPTH	12"
FACE AREA	1/3 S.F.
WEIGHT	38 LBS

MOSAIC PANEL SPECIFICATIONS



WIDTH (FACE)	24"
HEIGHT	10"
DEPTH	12"
FACE AREA	1 - 2/3 S.F.
PANEL WEIGHT	192 LBS

HARMONY RANDOM PANEL SPECIFICATIONS



WIDTH (FACE)	VARIABLE
COURSE HEIGHT	6"
DEPTH	12"
FACE AREA	VARIABLE
WEIGHT	N.A.



DAY 1

DAY 15

DAY 100

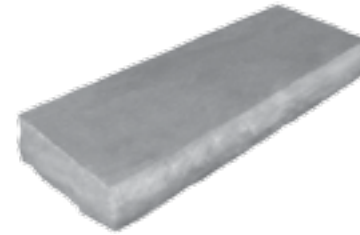
A & B CAP SPECIFICATIONS

A CAP B CAP



WIDTH (FACE)	14"	14"
WIDTH (REAR)	12"	16"
HEIGHT	3-5/8"	3-5/8"
DEPTH	12"	12"
FACE AREA	1/3 S.F.	1/3 S.F.
WEIGHT	45 LBS	55 LBS

VERSA-LOK 4' STEP UNIT



WIDTH	48"
HEIGHT	6"
DEPTH	16"

WILLOWCREEK LEDGESTONE UNIT SPECIFICATIONS



LENGTH	12"
HEIGHT	8"
DEPTH	4"
FACE AREA	1/3 S.F.
WEIGHT	30 LBS

BRUTE UNIT SPECIFICATIONS



WIDTH (FACE)	24"
WIDTH (REAR)	21"
HEIGHT	8"
DEPTH	18"
FACE AREA	1.33 S.F.
WEIGHT	245 LBS

TRI-FACE UNIT SPECIFICATIONS



WIDTH (FACE)	16"
WIDTH (REAR)	14"
HEIGHT	6"
DEPTH	12"
FACE AREA	2/3 S.F.
WEIGHT	78 LBS

BRONCO UNIT SPECIFICATIONS



WIDTH (FACE)	67.5"
HEIGHT	30"
DEPTH	45"
FACE AREA	14 S.F.
WEIGHT	4,662 LBS
FILLED WEIGHT	6,415 LBS

SQUARE FOOT UNIT SPECIFICATIONS



WIDTH (FACE)	18"
HEIGHT (REAR)	14"
HEIGHT	8"
DEPTH	12"
FACE AREA	1 S.F.
WEIGHT	86 LBS

BRONCO II UNIT SPECIFICATIONS



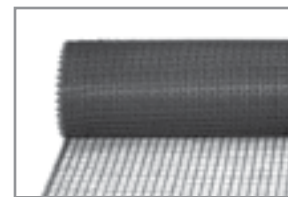
WIDTH (FACE)	48"
HEIGHT	18"
DEPTH	24" / 41" / 60"
FACE AREA	6 S.F.
WEIGHT	1,220/2,240/3,215 LBS

NEXUS SPECIFICATIONS



WIDTH	18"
HEIGHT	8"
DEPTH	12"
FACE AREA	1 S.F.
WEIGHT	86 LBS

TOOLS & ACCESORIES



VERSA-GRID



VERSA TUFF PINS



VERSA-LIFTER



6348 HWY. 36, SUITE 1
OAKDALE, MINNESOTA 55128

(651) 770-3166
TOLL-FREE (800) 770-4525
FAX (651) 770-4089

VERSA-LOK-MIDWEST.COM
INFO@VERSA-LOK-MIDWEST.COM

PRODUCTS SHOWN MAY BE COVERED
BY THE FOLLOWING:

U.S. PATENT D319,885, U.S. PATENT
D321,060, U.S. PATENT D341,215, U.S.
PATENT D346,667, U.S. PATENT
D378,702, U.S. PATENT D391,376,
U.S. PATENT D430,680, U.S. PATENT
D435,302, U.S. PATENT D439,678,
U.S. PATENT D452,332, U.S. PATENT
D458,387, U.S. PATENT 6,488,448,
U.S. PATENT 6,960,048, U.S. PATENT
7,229,235, U.S. PATENT 7,244,079,
U.S. PATENT D552,258, U.S. PATENT
D555,810 AND OTHER U.S. PATENTS
PENDING; CANADIAN INDUSTRIAL
DESIGN REGISTRATION NO. 63929,
NO. 71472, NO. 73910, NO. 73911,
NO. 73912, NO. 77816, NO. 79058,
NO. 82288, AND NO. 89084. I.C.B.O.
NO. 4625, CANADIAN PATENT NO.
2,313,061

VERSA-LOK, ACCENT, BRONCO,
BRUTE, COBBLE, MOSAIC,
VERSA-GREEN, VERSA-GRID, VER-
SA-TUFF AND VERSA-LIFTER ARE
REGISTERED TRADEMARKS AND
WEATHERED IS A TRADEMARK OF
KILTIE CORPORATION.

ENVIROLOK IS A TRADEMARK OF
AGRECOL CORPORATION.
COLORS SHOWN MIGHT NOT MATCH
PRODUCT COLORS EXACTLY. PHOTO-
GRAPHIC AND PRINTING PROCESSES
ARE NOT CAPABLE OF REPRODUCING
ALL PRODUCT COLORS. DUE TO MANU-
FACTURING PROCESSES, COLORS
MIGHT ALSO VARY BETWEEN
PRODUCTION RUNS. PLEASE VISIT
YOUR LANDSCAPING SUPPLIER TO
VIEW ACTUAL PRODUCT SAMPLES.

© 2016 KILTIE CORPORATION
PRINTED IN USA MDW-202 12-16

VERSA-LOK-MIDWEST.COM